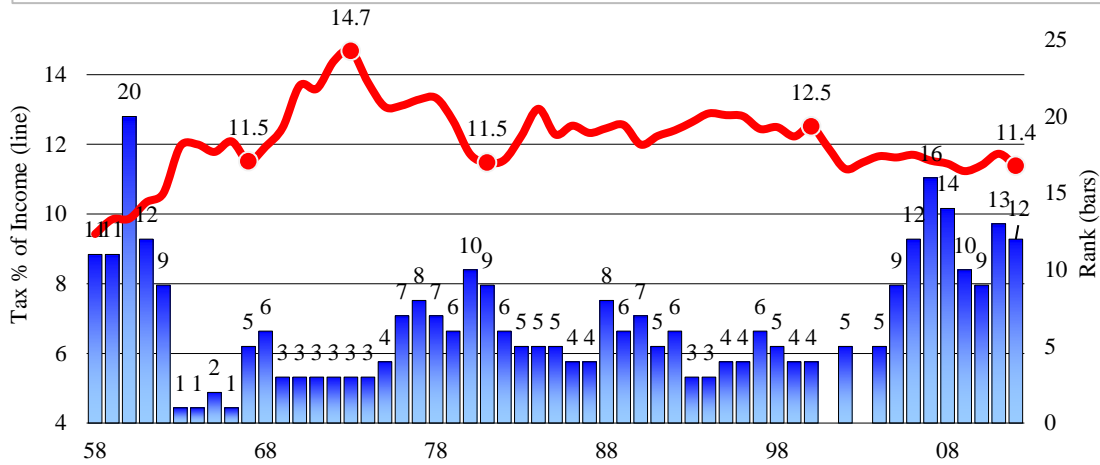


The chart and table below depict Wisconsin's tax rank history from 1958 through 2012 (the most recent year with state-by-state data). These are WISTAX calculations based on state tax data supplied annually by the U.S. Census Bureau. The red line shows total tax collections as a percent of personal income; the blue bars show Wisconsin's rank



Year	Tax % of Income	Nat'l Rank	Year	Tax % of Income	Nat'l Rank	Year	Tax % of Income	Nat'l Rank
1958	9.4%	11	1977	13.3%	8	1996	12.8%	4
1959	9.8%	11	1978	13.3%	7	1997	12.4%	6
1960	9.9%	20	1979	12.7%	6	1998	12.5%	5
1961	10.3%	12	1980	11.7%	10	1999	12.2%	4
1962	10.6%	9	1981	11.5%	9	2000	12.5%	4
1963	11.9%	1	1982	11.6%	6	2001	na	na
1964	12.0%	1	1983	12.2%	5	2002	11.3%	5
1965	11.8%	2	1984	13.0%	5	2003	na	na
1966	12.1%	1	1985	12.3%	5	2004	11.7%	5
1967	11.5%	5	1986	12.5%	4	2005	11.6%	9
1968	11.9%	6	1987	12.3%	4	2006	11.7%	12
1969	12.5%	3	1988	12.5%	8	2007	11.5%	16
1970	13.7%	3	1989	12.6%	6	2008	11.4%	14
1971	13.6%	3	1990	12.0%	7	2009	11.2%	10
1972	14.4%	3	1991	12.2%	5	2010	11.4%	9
1973	14.7%	3	1992	12.4%	6	2011	11.7%	13
1974	13.8%	3	1993	12.6%	3	2012	11.4%	12
1975	13.1%	4	1994	12.9%	3			
1976	13.1%	7	1995	12.8%	4			